

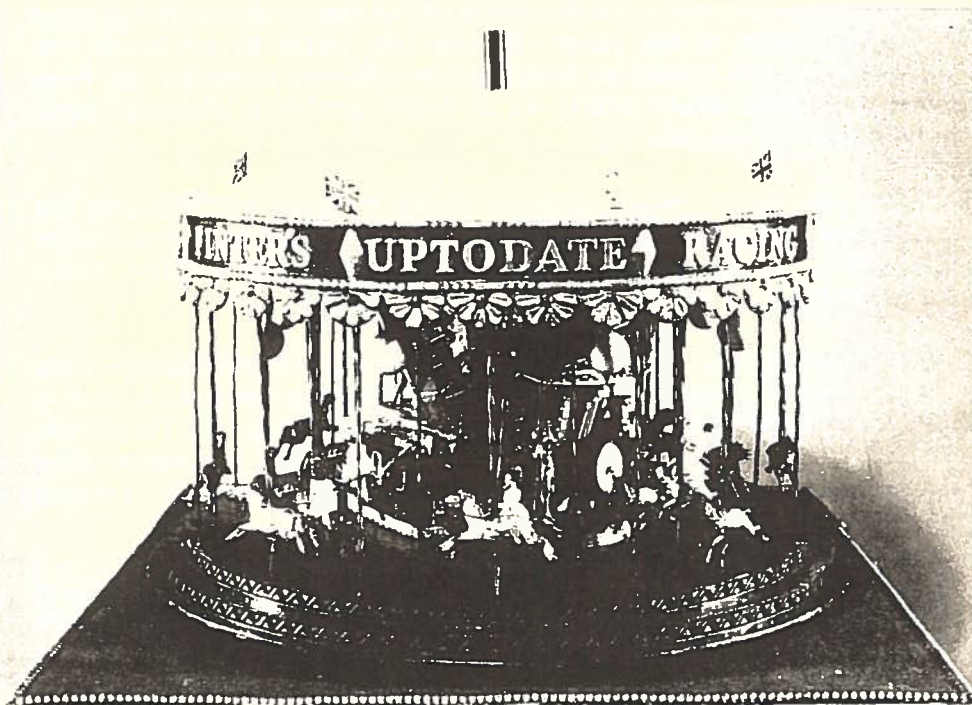
FRIENDS OF GUILDFORD MUSEUM

NEWSLETTER

DECEMBER 2000



ISSUE 11



The Roundabout

The Roundabout

The Roundabout displayed in the Toy Gallery and pictured on the front cover has delighted so many children and adults alike over the past twenty years that it has become almost an unofficial emblem of the Museum.

It was made by Arthur Finter, who was an engineer at the Dennis Bros factory before the First World War. When severely injured in an industrial accident he was nursed back to health at the old Royal Surrey County Hospital, now the Farnham Road Hospital. While convalescing he was able to fulfil a lifetimes ambition, to build a model of one of the steam driven fair ground roundabouts of his youth. It took two years to complete. He exhibited the model at shows around Surrey between the First and Second World Wars. As a "thank you" the proceeds were donated to the hospital.

The roundabout was installed in the museum in 1979 and the money collected still continues to be donated to the Royal Surrey County Hospital. In 1994 the roundabout gave 5,905 performances and raised £118 and 10 pence.

Alterations have been made to the mechanical mechanism over the years, such as replacing the original gramophone with a timed loop tape and in 1995 raising the charge to 10 pence. This enabled the roundabout not only to have an easier time with only 2,155 performances but also to double the amount raise for the hospital to £215.50.

Over the last few years the roundabout has suffered several bouts of malfunction. Richard Linguard the former Deputy Clerk and Solicitor to the Borough and a member of the Meccano Society has repaired the model at his own expense and for which we are all very grateful. It now spins round again to delight us all - so call in and make it go!

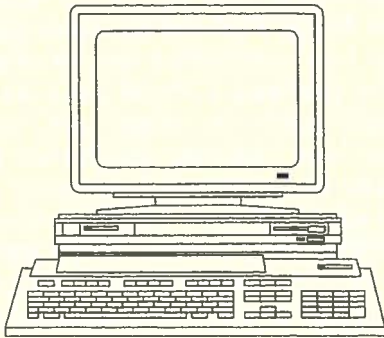
A MESSAGE FROM OUR CHAIRMAN

It seems only the other day that people were arguing about when exactly the Millennium was. However I do not think that there can be any argument that this Christmas is the Millennium Christmas, so it gives me much pleasure to thank all the Friends for their support, and a special thank you to those who have worked so hard for all of us and for the Museum.



With very best wishes for Christmas and the New Year.

Heather Anderson



**FGM.
DOT.
COM?**

Not quite. I have obtained 20Mb of free web space by registering fgm@supanet.com as an e-mail address and will be experimenting with this over the next few months. Members who have access to the internet may wish to visit www.fgm.supanet.com from time to time and watch progress. Comments will be welcome.

Derek Somner
d_desres@lineone.net

Secretary's Letter

I am happy to report that, again this year, membership renewal has been most encouraging. There was an 89% renewal rate which was an improvement on the 85% that we had last year. There are now 249 members and new members continue to join in a steady trickle. As I said in my letter a year ago, your committee no longer actively recruits new members and prefers to rely on first time and repeat visitors to the museum and, crucially, on word of mouth via existing members. So please in the latter context, continue to encourage your friends and relations to join.

During the past six months, we have been treated to an absorbing series of full day outings organised, as usual, by Peter Hattersley and Derek Somner. An early summer visit to Hampton Court was made truly memorable by the approach along the river by boat in brilliant sunshine; the palace and its gardens speak for themselves. Next came a trip to the Downland Museum in Singleton, which was somewhat less well supported than usual, however those that did go were able to enjoy a thoroughly informative tour conducted by members of the Downland Friends. There is perhaps a moral here as trips organised by Peter and Derek seem to reflect the famous Heineken advertisement, since "one reaches and hears about parts of the site that other tours....." Need I continue?! St Albans was a popular destination reached in a surprisingly short time. We were served coffee and biscuit in the recently built refectory. I deliberately use the singular as the biscuit was quite the largest anyone had ever seen and quite possibly the hardest, but delicious nevertheless.

A guided tour of this lovely old cathedral was followed by an accompanied meander around the site of the Roman town and a visit to the splendid newly built museum. In August a morning was spent at Apsley House, known as No 1, London, where we were regaled with anecdotes about Wellington including his much less than enthusiastic support for the Great Reform Bill of 1832. In the afternoon the newly refurbished Albert Memorial was examined from close by and from all quarters with comprehensive commentary. If you believe that you have already experienced the monument, may I suggest that you

think again and seek a close approach, the result is very rewarding ! A visit to Rochester and its Dickens connections followed and the final outing was to the Royal British Legion Poppy Factory in Richmond where the whole process of manufacture by disabled relatives of World War II veterans was seen. A tour around Marble Hill House, a small Palladian jewel built for Henrietta Howard, mistress of George II, completed the day. We are all indebted to Peter and Derek for their time , diligence and imagination in arranging these excellent outings.

The Millennium season of Village walks continued with peregrinations around Compton, with its extensive Watts interest, Wimbledon, Richmond and Worplesdon. The final walk also included a visit to Merrist Wood to see architect Norman Shaw's Edwardian mansion which was exactly rebuilt after a fire some 25 years ago. We are again very grateful to Jackie Malyon for her enthusiastic and comprehensive guidance. Marjorie's Quiz evening, which has become a regular occurrence, was attended by 25 members who racked their brains on complex questions, this time including ones on specific points in the past ten Friends' newsletters ! We thank Marjorie and her helpers.

The Undercroft in the High Street, which has been fitted out with replica contemporary furniture funded by the Friends, has had an active season this year. Volunteers, all drawn from the Friends, have put in over 400 hours of stewarding. In addition members have also contributed over 250 hours in stewarding the five exhibitions organised by Matthew Alexander and his staff this year. Our grateful thanks go to all who have so willingly helped. 2000 has also been another active year for the Town Guides. These volunteers, of whom more than half happen to be Friends, give generously of their time, energy and enthusiasm to conduct visitors on regular tours of Guildford. Donations generated during these walks have amounted to £700 this year and in total have amounted to over £4000 since the Friends were inaugurated in 1995 ; a handsome achievement indeed.

And finally a word of thanks to all our members, without whom the Friends could not function. Please continue to support us and in so doing benefit Guildford's worthy museum. A very happy Christmas and New Year to you all.

Richard Sinker Hon. Secretary.



01483-502207

The Curators Column

It cannot be said too often how grateful the Museum is to its Friends. Typically, it is the purchases made for the collections which attract the limelight, but the time given by the volunteer stewards is as important -or more so. The Undercroft could not possibly be made available to the public without the Friends assistance. Last year from April to September, Friends devoted 404 hours to the Undercroft. In addition, 255 working hours were spent stewarding exhibitions at Salters. This gives a grand total of 659 hours - the equivalent of an additional part-time member of staff. It is tempting to suggest a monetary value for the number of hours given, but there would be little point: the assistance of the volunteers is priceless.

At the final meeting of the Arts & Recreation Committee in July, the Borough Council decided to form a working party of councillors and others to explore the possibilities of future development at the Museum. The first meeting was held on 25th October, with Heather Anderson representing the Friends. There was overall support for significant Council investment in the Museum. However, the question of an extension or Castle Grounds entrance would depend very much on finances available after the Civic Hall's future is resolved. In the meantime, it is proposed to consider a major redisplay of the existing museum galleries using external designers and modern display techniques. Clearly, this is not something which will be accomplished rapidly but it does offer exciting prospects for the future.

Matthew Alexander - Curator, Guildford Museum.

MIXED BATHING

To start on April 20

Mixed bathing at the baths when they open on April 20th was authorised by the Town Council on Tuesday. It will be on Friday evenings from 6pm to 9pm: the charge will be sixpence and no gentlemen will be admitted unless accompanied by a lady. The maximum time allowed for the use of a cubicle will be 40 minutes.

Curtains will be put up in front of each cubicle - the adoption costing the town £10.

Surrey Advertiser 14th April 1925



Ladies queuing outside the Castle Street Baths in the 1930's

This picture is the copyright of Surrey History Service and is reproduced by permission of Surrey History Service.

Museum Research

Mary Alexander, Assistant Curator, who is responsible for the collections, gives an incite here into some of her work :-

Two of my projects at the moment are not about new acquisitions, but about very old ones - the Wisley logboat and the Guildown Saxon cemetery. The Logboat was discovered in 1907 and given to Weybridge Museum, then transferred to Guildford Museum in 1988. The Saxon cemetery was excavated in 1929-30 and the finds were almost immediately given to the Surrey Archaeological Society.

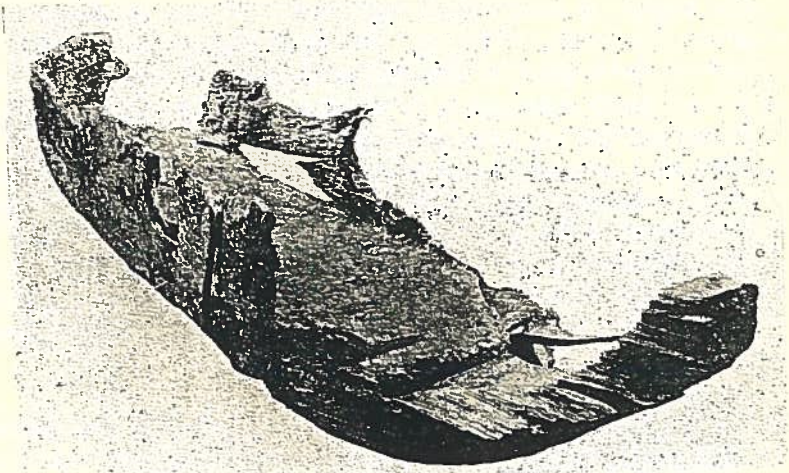
The Wisley Logboat

The logboat was found in the River Wey and we are very lucky that it has survived nearly a hundred years without any specialist conservation. Nowadays, of course, a waterlogged object is kept wet on discovery and slowly dried out under controlled conditions. Nothing like this was done to the logboat, but it is in remarkably good condition. Parts of it were missing when it was discovered and these were reconstructed many years ago using balsa wood and papier-mache. Although not, perhaps, methods that would be used today, the old restoration looks convincing.

The logboat was transferred to us because Weybridge Museum could no longer display it, and because it was found inside the Guildford Borough boundary. However, the boat is large - about 11 feet long - and we could not find room to display it. Also, as no-one knew how old it was, we did not know which section of the Museum it would be most suitable for, so it has been in storage ever since.

When it was decided to have a display on the Wey Navigation in September, with the National Trust, the logboat was an obvious exhibit and we decided it was time to do something more positive with it. We have commissioned a report on it from a firm of conservators who can also get a radiocarbon date for it. A thorough conservation would cost several thousand pounds so in the meantime we have decided to get the dating done while we find the money for the conversation. The Friends have very kindly agreed to fund most of the dating but we still

have to find the balance. Once we know the date we hope that it will be easier to find the funds for conversation. we have looked into tree-ring dating but have decided not to pursue it because although a date would be gratifyingly precise, it may be impossible to match the rings, or to get a large enough sample. Radiocarbon dating will definitely produce a date and even though it is always within a range of years, rather than one year as with tree-ring dating, it would be close enough for us to say whether the boat was, for example, Neolithic or Bronze Age.



The Wisley Logboat as found

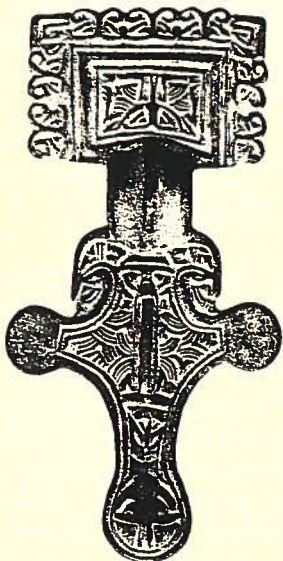


Guildown Cemetery lies in the grounds of a private house on the top of the Mount. In 1929 the gardener for the owners, Mr and Mrs Kempster was planting some trees when he came across the burial site. This was drawn to the attention of the Surrey Archaeological Society who under the direction of Colonel O.H. North painstakingly excavated the site inch by inch. Mr and Mrs Kempster kindly offered the service of their gardener, Mr Engall for three days of every week. Some 36 Saxon graves were found, mainly of women and children with artifacts of the period. Food or drinking vessels were often found by their heads. Bead necklaces of varying lengths were


found along with bracelets, broaches, buttons, and pendants. Many of these are on display in the Museum. Mr and Mrs Kempster not only provided the assistance of their gardener but provided lunch for the band of excavators as well ! Here Mary tells us about her second project.

Guildford Saxons find way to the Natural History Museum

The Guilddown cemetery is an exciting project because I have just discovered where the missing bones are. The objects from the pagan graves were deposited in the Museum very soon after the excavation by the Archaeological Society but the bones were sent to the Royal College of Surgeons, where Sir Arthur Keith was going to write a detailed report on them. This never appeared, and the Royal College was bombed during the War so it was assumed that all the bones had been destroyed. I read recently that some other bones thought to have been destroyed were in the National History Museum so I asked if the Guilddown bones were there and was delighted to be told they were. However, only about a quarter of the skeletons are there and it looks as if the others may have been destroyed. I am still pursuing this.



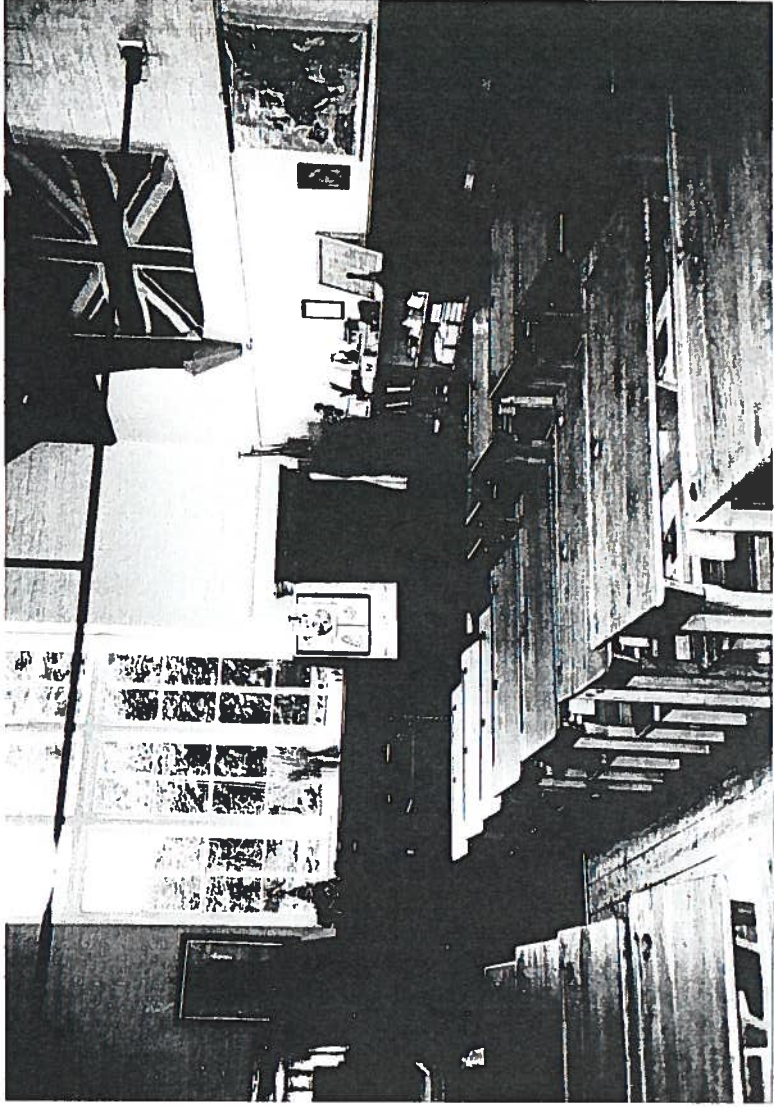
A Saxon Brooch
found at Guilddown

I am also re-assessing the objects. The excavation was published thoroughly and promptly, but obviously Anglo-Saxon studies have advanced since 1930 and it is time for a new publication of the objects and the execution victims. Although the original report suggested that some of the burials were those of criminals it is only recently that this subject has been researched and we need to look at Guilddown in the light of this new research. This is a very long term project, but I would like to make this important site better known to Guildfordians as well as to scholars. 

The Friends have enabled the Museum to make its most important acquisition for many years. This is the entire contents of a Victorian schoolroom from South Bersted, in West Sussex. Previously located in the church school there, the collection, which includes desks, pictures, equipment, books and accessories, was built up by Sue Enticott. She offered "Victorian school days" to school groups, in which a typical day in a Victorian school was recreated. She has now decided to discontinue this, and Guildford Museum was very fortunate to be offered the entire collection for £4,500. The Friends agreed to pay this sum in its entirety, thus providing a facility that I have long wished to be able to offer. This kind of material is becoming harder and harder to obtain, and the opportunity to acquire a complete assemblage is unlikely to occur again. At the moment, it is planned to set up about half the desks in the old Muniment Room and offer short sessions - to perhaps half a class, while the other half tours the Museum. It is hoped that in future it will be possible to set the whole classroom up in a suitable building, and perhaps offer full day sessions. So important is this acquisition that I have decided to make it the centrepiece of our summer exhibition in 2001. This will be the centenary of the death of Queen Victoria and a suitable opportunity to look at, for example, the changes in children's lives during her reign. Once more, the Friends have made an outstanding contribution to the service to the work of the Museum.

Matthew Alexander
Curator

November 2000

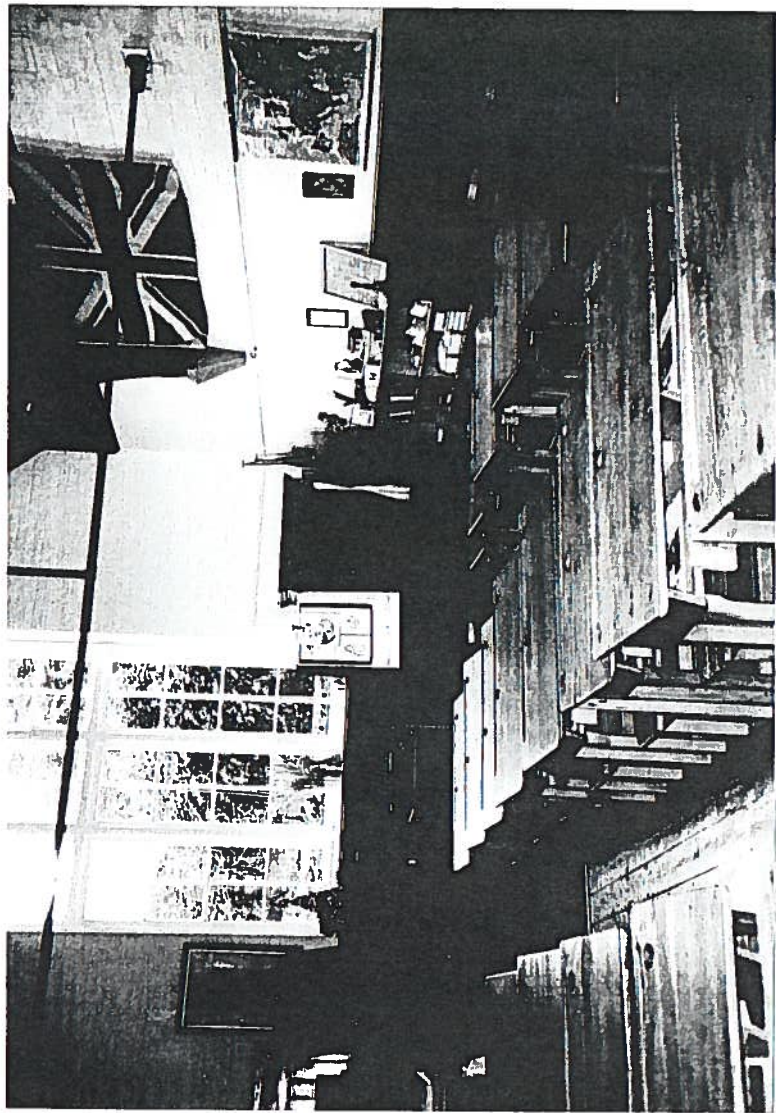


A VICTORIAN CLASSROOM

The Friends have enabled the Museum to make its most important acquisition for many years. This is the entire contents of a Victorian schoolroom from South Bersted, in West Sussex. Previously located in the church school there, the collection, which includes desks, pictures, equipment, books and accessories, was built up by Sue Enticott. She offered "Victorian school days" to school groups, in which a typical day in a Victorian school was recreated. She has now decided to discontinue this, and Guildford Museum was very fortunate to be offered the entire collection for £4,500. The Friends agreed to pay this sum in its entirety, thus providing a facility that I have long wished to be able to offer. This kind of material is becoming harder and harder to obtain, and the opportunity to acquire a complete assemblage is unlikely to occur again. At the moment, it is planned to set up about half the desks in the old Muniment Room and offer short sessions - to perhaps half a class, while the other half tours the Museum. It is hoped that in future it will be possible to set the whole classroom up in a suitable building, and perhaps offer full day sessions. So important is this acquisition that I have decided to make it the centrepiece of our summer exhibition in 2001. This will be the centenary of the death of Queen Victoria and a suitable opportunity to look at, for example, the changes in children's lives during her reign. Once more, the Friends have made an outstanding contribution to the service to the work of the Museum.

Matthew Alexander
Curator

November 2000



A VICTORIAN CLASSROOM

The Sherborne Missal

Next time you walk through the Friary shopping centre give a thought for the outstandingly talented artist John Siferwas who six hundred years ago lived at the Dominican Friary which stood on this site. The Sherborne missal, recently purchased by the British Library, is a liturgical book containing the words and ceremonial directions for the celebration of the mass. Its manufacture has been dated to 1400-1407. The text was written by the Benedictine, John Whas and the illustrations by John Siferwas, a Dominican from the Guildford Friary. Among the illustrations, which include many beautiful portraits of birds, John Siferwas portrayed himself six times and the scribe, seven times. The scribe tells us in a brief passage at the end of the book that he had to rise early each day to write the book and that his body was much wasted as a result. **m**

Page 225 Marginal detail depicting the major artist, John Siferwas, wearing the Dominican habit. Inset shows the entire page.



CLOCK and CHIMES

HOLY TRINITY CHURCH

From Holy Trinity and St Mary's Parish Magazine for January 1920.

" Item: payed for mending of the Church Clock X pence" This was one of the church wardens expenses in 1514. It is almost certain it was the same clock which fell to the ground with the tower in 1740. Fifty one years passed away after the destruction of the old church before the old clock was restored. The Rt. Hon. Lord Onslow and Cranley restored the clock in 1791 and this is the reason we see the Onslow crest surmounting the face. The old clock was fitted with a chime barrel when it fell in 1740 and this was replaced. The chime was a simple run down the scale on six bells. Much was done to improve the church in 1843 and a few years later Mr George Wilkins, organist of St Nicolas composed the chimes. Somebody from Chard made an incorrect copy of the air installed in the church tower there and called it "The Chard chimes". The Holy Trinity chimes before 1907 had been installed at Bournville, Irthlingborough, Macclesfield and Northleach. There are two mottos. The one above the crest runs FESTINE LENTE "Hasten slowly". The other below the dial is the passenger of the hands. "FUGIMUS IMPUTAMUR" . It may be freely translated as "Tho' we fly, we are counted".

NEW MEMBERS

We are delighted to welcome the following new members to our Association and look forward to meeting them at the functions.

Mrs J Crockford

Mrs Davis

Mr W & Mrs A Littleboy

Rev J Todd

Mrs F Dawson

Mr R Lansdowne

Mr K Powell

Mrs S Wells

Mrs I Winmill

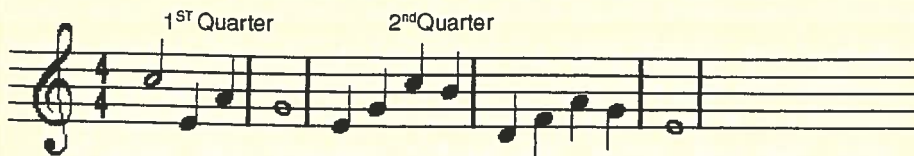
Mrs J Hamilton

Mrs E Lawrence

Miss J Searle

Miss C Wells

THE GUILDFORD CHIMES



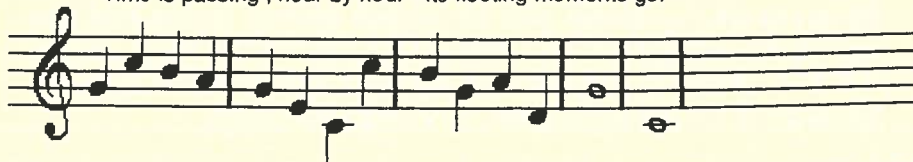
Lift up your heart, - God is with you, and will NOT leave you.



Trust in God, be not afraid ; - Be still and rest in him.



Time is passing , hour by hour - Its fleeting moments go.



Lift up your heart and praise the Lord, - And count your blessings, so -



FRIENDS COMMITTEE FOR 2000/2001
Chairman Heather Anderson, Vice-Chairman Bill Bellerby,
Secretary Richard Sinker, Treasurer Tim Bryers, Curator Matthew Alexander,
Events Administrator Derek Somner, Visits Organizer Peter Hattersley,
Museum Volunteer Organizer Marjorie Williams, Magazine Editor Eric Morgan,
- Maureen Newman, Jennifer Powell -

Guildford Museum

Before the opening of an extension to Guildford Museum towards the beginning of the last century, an interesting letter appeared in the Surrey Advertiser on 16th January 1909 from Miss Gertrude Jekyll, the garden designer who gave her collection of West Surrey artifacts to the Museum.

Guildford Gateway House

A plea for an old wall

To the Editor

Sir, There must be many who, with your present correspondent, feel the keenest regret on account of the proposed demolition of the northern portion of the old Castle wall in Quarry Street and must desire to join in the protest expressed in your last issue by Mr Thackery-Turner, speaking for the Society for the Protection of Ancient Buildings of which he is the secretary.

Within the recollection of one who has borne it for more than 50 years Quarry Street with its ancient church at one end and the Castle walls near the other and it has for the most part of the 17th and 18th remained practically unfronted, a precious heritage to our beautiful town and neighbourhood.

It is well known that the Surrey Archaeological Society lodged in Gateway House needs an expansion of building for the housing and display of their ever growing collection and that the garden adjoining the house is the most convenient and obvious site but as Mr Thackery Turner points out, such a building could be erected behind the wall and which, in any case, be most suitably lighted with top lights such as are used in art galleries.

The feeling is very strong in my near district and I can only suppose it to be equally prevalent not only in the large area to the south and south west whose inhabitants enter Guildford by Quarry Street but by all who live in the neighbourhood and

know the beautiful old street which could not be more grievously despoiled by the substitution of any facade, however meritorious in itself, for the old Castle Wall which has stood there for many centuries.

With many others and with the extreme regret for the expression of any dissent from a conclusion arrived at by so learned and careful as the Surrey Archaeological Society, I venture most earnestly to hope that their present intention may be reconsidered.

Gertrude Jekyll
Munstead Wood Godalming


The architect Ralph Nevill constructed a long reply which included this relevant extract.

The wall is no part of the ancient gateway building and it is certainly not ancient - perhaps 100 years. The description of it as a fine old wall seems to me an exaggeration : it is commonplace brickwork and overlays the road by four feet at one end. In some cases that adds picturesqueness but it is not a nice feature in a wall skirting the footpath up an important highway. Moreover when the ground is removed from inside, the ivy and other growth that covers the wall and has a great deal to do with such beauty as it has, must necessarily be destroyed.

I will however be glad enough to modify the plans so as to retain the greater part of the wall provided that permission is made for the extension of the building in another direction.

R. Nevill
Castle House Guildford

In fact the plans were modified. The contract was carried out by Stanley Ellis and cost £596

The cost was met by Alderman F. Ferdinand Smallpiece as a gift to the town. Sadly Ralph Nevill passed away a year after the extension was built, a victim of influenza. 

I am indebted to Ron Hill for submitting these letters and other items from the Surrey Advertiser that appear in this newsletter - Editor

The **Notice Board**

In early September we all gathered at Peter Hattersly's House for a most pleasant barbecue - excellently cooked - followed by country dancing in which we all took part. The weather was very kind and even the wasps took a holiday. Everyone enjoyed themselves and particular thanks are due to Peter and his wife and all those who brought food and put away all the tables

Surrey Advertiser 17th April 1875

The usual STOCK and SHEEP fair will be held at Guildford on Tuesday 4 May next. In consequence of the day being an ordinary Market Day all store sheep will be penned in Fairfields. The Stock and Sheep will be received in North Street as usual. Applications for Pens in its Fair Fields to be made to Mr John Loveland of Harvey Road and 24 North Street Guildford.

Apology

From the Editor : In the last Newsletter my statement regarding the subscriptions was incorrect and I apologise for any concern this may have caused members. The correct situation is as follows :-

At the AGM on May 17th this year, it was agreed that the annual subscription would remain at the current level for the period 1st April 2001 to 31st March 2002. As the time of membership renewal comes before the AGM, the decision on the level of subscription relates to the following year and not the current year. It was also agreed that the financial year for the Friends be changed to the calendar year ; this makes it easier to ensure a complete set of accounts at a time when activity is at a minimum.

To Whet Your Appetite

The outings already planned for 2001 are given on the back page but Peter Hattersley is already busily planning tours a year or more ahead and so to whet your appetite. I will let you into some of his secrets.

For December 2001 he hopes to arrange a guided tour of Horsley Towers including the recently refurbished farm buildings, followed by a drinks reception, Dinner in the Grand Hall and an after dinner speaker on the "Towers". Coffee in the Library.

Other events in the planning are:-

- Darwin's House (Downe House) Churchill's House(Chartwell)
- Imperial War Museum (New extension - Holocaust Exhibition) followed by visit to Lambeth Palace
- Bignor Roman Villa, Arundel Castle and Lancing College.

With such exciting events please spread the word around and encourage your friends to join us.

To join the FRIENDS OF GUILDFORD MUSEUM, please send a cheque with the appropriate subscription to
Mr T.C.Bryers, Friends of Guildford Museum,
2 Southbury, Lawn Road, Guildford, GU2 5DD

Subscription rates for 2000/2001

Individual	£5	Family	£10	Under 18's	£2
Corporate	£25	Individual Life	£100		

Please make cheques payable to
FRIENDS OF GUILDFORD MUSEUM

A Century of Women - A Celebration of Women's Lives in Guildford

(An Exhibition to be held at the Museum in March as part of the Women's Festival 3rd to 17th March 2001)

Woman's lives have changed dramatically over the last 100 years. Events such as the Suffragettes, two world wars and more recently the campaign for Women's Lib all had a huge impact on their lives, often changing them forever. How have the events of the last century affected the lives of women in Guildford? What stories do they have to tell us about their lives? This is what Guildford Museum and the Surrey Advertiser want to know as they gather information for this exhibition.

Were you a member of the Women's Lib? Was your mother or grandmother involved with the Suffragettes in Guildford? Were you a teddy girl in the 50's or do you just have an interesting story about your life that you would like to tell us?

You don't have to have lived in Guildford all your life. We want to hear from you whether you live on a council estate or in a manor house on the green. Please contact us and tell us about yourself or someone you know. The exhibition will be about the women of Guildford over the last century. It is their story and your story, but we need your help in compiling it. Contact Carol Brown at the Museum Tel No 01483 444741 or David Rose at the Surrey Advertiser, Woking Road, Guildford, GU1 1QA

If any one feels that they would like to become more involved in the project by helping with interviews or typing them up please contact Carol at the Museum.

Other talks and events planned by the Museum

Heroines, Harlots & Housewives - as part of the Women's Festival - a day long series of talks including lunch and refreshments

Museums Week - end of May

July 7th Elizabethan Event

June 30th to July 14th Elizabethan exhibition

Monday July 9th 2001 Lecture by Dr David Starkey on Elizabeth I - 7-30
Electric Theatre. Autographed copies of his recent biography in paperback will
be available for sale at 10% discount to Friends.

Index of articles and notes - Issues 1 to 10

	Issue	Page
Archaeological News	6	13
No 8, Angel Gate	6	14
Border Ware	3	12
The Castle Keep (Research on)	3	1
The Counter	6	12
Dicken's in Guildford	8	17
The Eashing Plate	9	6
Edward the Martyr	5	12
Electric Tramway 1903	10	14
Electricity Works 1913	4	12
Guildford 1000	8	7
The Guildford Penny	7	10
13th (Guildford) Surrey Rifle Volunteers Badge	8	5
13th (Guildford) Surrey Rifle Volunteers	9	7
The Hereford Chair	3	5
History Panels	10	6
Interactive Video Display	4	10
James Price	7	14
Jane Austin	3	13
The Jews of Mediaeval Guildford	2	10
Lewis Carroll	5	3
Lewis Carroll and the Enigma Code	6	15
Lewis Carroll, his Family and Guildford	5	7
Lewis Carroll (Reminiscences of Frances Menella Dodgson)	9	14
Millmead House	10	8
Dr Monsell	4	13
Museum Excavation unit	1	6
Mediaeval Room - High Street (Synagogue?)	1	11
New Acquisitions	9	11
Parson's Hospital - Stoke Road	1	14
The Possible Synagogue	5	3
St Catherine's	2	15
Symbols of Power (the town maces)	4	7
TR2 Sports Car (Victory Industries)	10	5
The Undercroft - a mediaeval wine merchants shop?	6	6
Wise words from Lewis Carroll - How to go on with a letter	10	12
P.G.Wodehouse	9	5
The Wonderland Stamp Case	7	8

Make a note in your Diary

Events 2001

- 14th February Saturday SKITTLES MATCH -Grantley Arms Wonersh
- 14th March Wednesday LONDON TRANSPORT MUSEUM Covent Garden and THEATRE MUSEUM - Make-up demonstrations and costume workshop (Guided tours of both Museums)
- 3rd April Tuesday SURREY VILLAGES - HASCOMBE (half day)
- April (date to be advised) LEGAL LONDON and OLD BAILEY (Repeat of previously oversubscribed visit) - City and Village Tour
- May (date to be advised) DOCKLANDS CITY AIRPORT (includes trips on Jubilee Line and Docklands Light Railway)
- 16th May Wednesday ST MARTHA'S CHURCH 10am -12 noon (Tour by the Friends of St Martha's)
- 5th June Tuesday Surrey Villages - Betchworth (full day)
- 17th June Sunday FROG TRIP (by amphibious DUKW around Westminster and on the Thames. Starts County Hall. Followed by Somerset House and The Gilbert Collection - guided tour
- 12th July Thursday SURREY VILLAGES - BOOKHAM (full day)
- 14th July Saturday DOVER CASTLE including guided tour of Tunnels - Dover Museum, New Bronze Age Gallery. Depart 8am
- 1st August Wednesday SURREY VILLAGES - PUTTENHAM (full day)
- 20th September Thursday WILTON HOUSE - Home of the Earle of Pembroke near Salisbury - Introductory Video - then at our own pace, Visitor Centre, House and Grounds. The Wilton Carpet Factory Exhibition - Guided Tour
- October (date to be advised) SURREY VILLAGES - FETCHAM (half day)

Tickets are obtainable from Derek Somner,
18 Abbot Road, Guildford GU1 3TA



(01483) 539447